



jordan fishwick

11 Alveston Drive, SK9 2GA
Guide Price £679,950



Alveston Drive Wilmslow SK9 2GA

Guide Price £679,950




A stunning and significantly extended four bedroom detached property situated on the highly popular Villas development in Wilmslow. The property is a short drive away from Wilmslow centre which offers a wide range of amenities, which include a number of local shopping facilities, bars, restaurants, local leisure centre and with Wilmslow train station offering a direct service to London Euston and Manchester City centre the location caters for many different needs. Within a 10 minute drive away there are many additional amenities such as fitness centres, golf courses, Marks and Spencer and John Lewis. The property is well placed for easy access to the M56 for commuters to Manchester and the North West commercial centres and Manchester Airport is less than 20 minutes away. This impressive property has undergone a significant rear extension to the ground floor providing a large open plan and stylish/sociable, kitchen diner and family space. The 'Keller' kitchen has a stunning central island unit and is fitted with a number of high quality Neff integrated appliances. A large set of bifold doors leading to the garden complete this amazing space. In brief the property comprises: an entrance hallway, downstairs WC, small integral garage for storage. There is a reception room with cast iron wood burning stove, the aforementioned large open plan kitchen diner and family space to the rear. Whilst to the first floor, there are four bedrooms with the principal bedroom benefiting from a stylish and modern en suite shower room. There is also a modern family bathroom. To the rear of the property there is an enclosed garden with mature borders with the garden being laid mainly to lawn. There is a blocked paved driveway providing off-road parking for a number of vehicles.



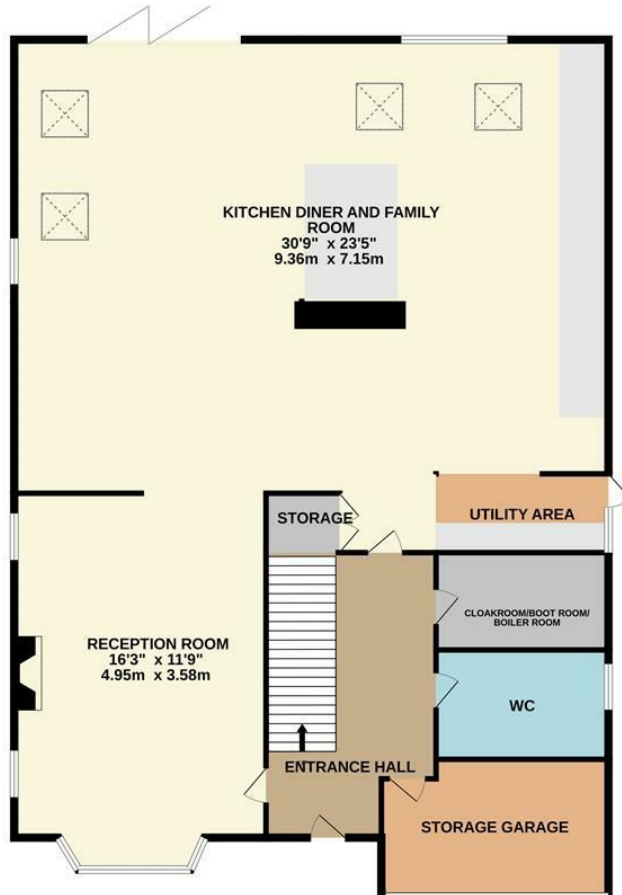
- Extended Detached Property
- Four Bedrooms
- Stunning Kitchen diner
- Open plan Family space
- Mature garden
- Small Garage for storage
- Modern Bathroom and Ensuite



Energy Efficiency Rating		
	Current	Potential
Very energy efficient - lower running costs		
(92 plus) A		
(81-91) B		
(69-80) C	74	83
(55-68) D		
(39-54) E		
(21-38) F		
(1-20) G		
Not energy efficient - higher running costs		
England & Wales		EU Directive 2002/91/EC 



GROUND FLOOR



1ST FLOOR



Measurements are approximate. Not to scale. Illustrative purposes only
Made with Metropix ©2026



These particulars are believed to be accurate but they are not guaranteed and do not form a contract. Neither Jordan Fishwick nor the vendor or lessor accept any responsibility in respect of these particulars, which are not intended to be statements or representations of fact and any intending purchaser or lessee must satisfy himself by inspection or otherwise as to the correctness of each of the statements contained in these particulars. Any floorplans on this brochure are for illustrative purposes only and are not necessarily to scale.

Offices at: Chorlton, Didsbury, Disley, Hale, Glossop, Macclesfield, Manchester Deansgate, Manchester Whitworth Street, New Mills, Sale, Wilmslow and Withington

36-38 Alderley Road, Wilmslow SK91JX
01625 532000

wilmslow@jordanfishwick.co.uk
www.jordanfishwick.co.uk